



# Our fruitful year

Annual  
review  
2016



# Successful



2016 has seen PIP take significant strides forward. We have surpassed many of the strategic objectives of our current three-year plan, putting us in a **strong position for the future**.

A major focus has been understanding and beginning to shape the next stage of PIP's development – ensuring we have the capacity to meet the **increasing demand for our excellent services**; meeting the needs of increasingly complex service users; and ensuring that what we offer remains fresh, vibrant and meaningful to those whom we've supported for some time. These are intricate issues, and we've tested out our understanding of the changing learning disability landscape by speaking with stakeholders, other providers, and experts near and far.

2016 also saw the official launch of our campaign *See Me, Accept Me, Value Me*, which is aimed at **raising awareness** of the needs of adults with learning disabilities. Beautifully displayed by our partner John Lewis Oxford Street in the stunning portraits shown

below, the campaign underpins all of PIP's work, highlighting the barriers faced by the people we support, along with the important work we do to help overcome these.

With an increasing **focus on vocational skills** and outlets for PIP students, we piloted our new fresh juice stall, Fruitful. This social enterprise project is a wonderful example of how we aim to share our work with the public. It encompasses many of the core themes that PIP's work revolves around, such as health and well-being, independent living, numeracy and literacy, employability and communication skills. It also provides a practical focus for students to demonstrate the skills they learn at PIP.

With a keen eye cast on PIP's future development, it's wonderful to be able to look back on a year that once again demonstrated how well we've **met the needs of the people we serve**. We've extended our networks and shared our stories with more people than ever before.

**Bill Feeney, Director**



Marcio



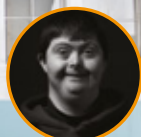
Lauren



Emma-Louise



Narjis



Danny

John Lewis



# Local

PIP – Pursuing Independent Paths – encourages and empowers adults with learning disabilities to reach their full potential. We are a small local provider in London, with big ideas. All our activities focus on promoting choice, participation and independence.

At our **W9 service**, PIP equips students with valuable skills, developing opportunities for independent living skills, community integration, creative self-expression, leisure activities and fun. At our **SW1 service**, we enable our service users – many of whom are older, isolated and living alone – to access their local community. Our **Community Development Project** works intensively one-to-one with those who have high support needs and access the outside community on a very limited basis. Our innovative **Travel Training service** provides intensive one-to-one training on using public transport for independent, individual journeys.

► Bravo to PIP Theatre Company who produced and performed *The Journey of Peace*, a story of conflict, resolution, love, loss and peace.



▲ Our travel training offers a route towards independent living.

◀ Real people. Real stories. A window into our world. PIP took learning disability to the high street, with John Lewis Oxford Street featuring five stunning displays of our students in its windows for three weeks. Showcasing our work on the theme *See Me, Accept Me, Value Me*, this highlighted our vision that people with learning disabilities should be seen, accepted and valued in the communities where they live, work and play. ►







**Our Fruitful social enterprise encapsulates all we do at PIP – focusing on health and well-being, independent living, numeracy and literacy, employability and communication.**

Fruitful provides a practical, real world environment with great opportunities for PIP students to increase their vocational skills and confidence, interact with the public and make meaningful contributions to their community. It also helps educate the general public to see, accept and value people with learning disabilities in the community. The heart of the enterprise is the Fruitful stall, run by PIP students, staff and volunteers. Our vision is that the stall will operate at local street food markets, other community events and corporate partner offices, using produce grown in our Fruitful garden.

▲ The Fruitful stall is the perfect place to showcase what students have learned and also gives them fruitful employment.

► Shardonnay adds carrots to the juice-making blender.

▼ Students grow and tend fruit, vegetable and herb plants in the Fruitful garden, learning new skills and understanding where great food comes from.





# Aspirational

PIP offers a flexible and dynamic range of services, including a full range of accredited training and education such as literacy and numeracy; travel training; creative arts and drama; independent living skills; nutrition, cooking and healthy eating; exercise and lifestyle choices; leisure activities; social and emotional development; employment skills and work placements; and support into mainstream education.

All our services work to the following outcomes:

- students gain life skills
- students build social skills
- students lead a more independent life
- students improve their health, well-being and self-esteem
- students increase their social interactions within their community
- happiness, comfort and improved quality of life for families and carers



# Skilful



▲▲ Cultural studies sessions introduced this year explore different aspects of culture and diversity. The sessions also help students understand and unravel some of the most pressing world issues that are in the news.

▲ Introducing Duaa, Rashedul and Marcio, the successful candidates for PIP's new receptionist role.

◀ Lauren gets really good work experience at a local charity shop. Her skills and confidence grow week by week.



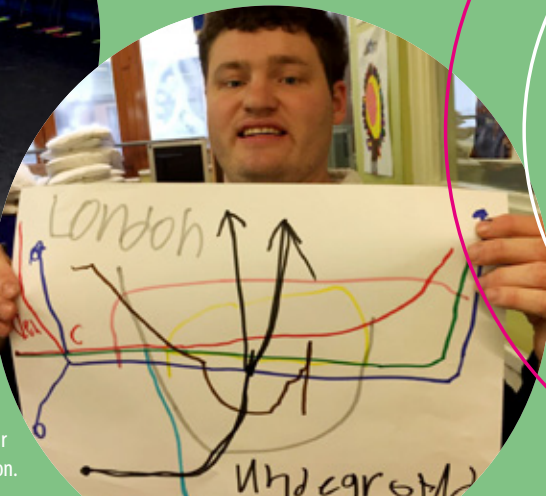


# Transformational



◀ Joyfully juggling with circus skills.

▶ Art is a big hit at PIP and helps our students express themselves.



▼ Students loving their cycling session.



◀ Using drama is an incredible way to develop confidence and self-esteem, and for students to get to know themselves through self-expression. *PIP's Got Talent* rocked, giving everyone a chance to perform, create and enjoy, through musical performances, dancing and impersonations.



# Financial

## REPORT OF THE INDEPENDENT AUDITORS to the Trustees of PIP – Pursuing Independent Paths Limited

We have examined the summarised accounts set out on this page.

### Respective Responsibilities of the Trustees and the Auditors

You are responsible as Trustees for the preparation of the summarised accounts. We have agreed to report to you our opinion on the summarised accounts' consistency with the full accounts, on which we reported to you on 30 September 2016. We have carried out the procedures we consider necessary to ascertain whether the summarised accounts are consistent with the full accounts from which they have been prepared.

In our opinion, the summarised accounts are consistent with the full accounts for the year ended 31 March 2016.

HW Fisher & Company, Registered Auditor  
Acre House, 11–15 William Road, London NW1 3ER

The summarised accounts on this page have been extracted from the audited accounts of the charity which were approved by Trustees on 26 September 2016. These summarised accounts may not contain sufficient information to allow a full understanding of the financial affairs of the charity. A copy of the full Annual Report and Accounts will be submitted to the Charity Commission. For further information, the full Annual Report and Accounts, including the unqualified report of the Auditors, should be consulted.

A copy can be obtained from the charity's offices at 4E Warwick Court, Shirland Mews, London W9 3DY.

### Board of Trustees

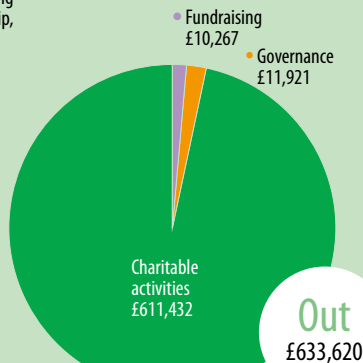
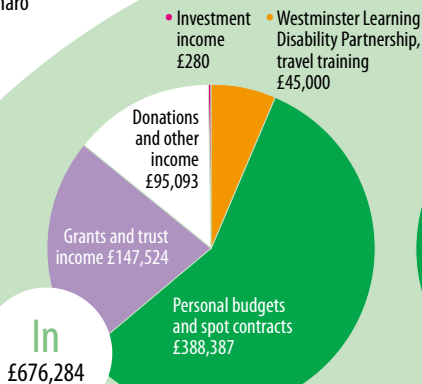
Tim Matthews, Chair  
David Fletcher, Treasurer  
Chris Allchin  
Francesca Carbonaro  
John Leach  
Mike Locke

## Summarised balance sheet at 31 March 2016

	£	£
<b>Fixed assets</b>		
Tangible assets		18,066
<b>Current assets</b>		
Debtors	130,084	
Cash at bank and in hand	177,085	
	307,169	
<b>Creditors: amounts falling due within one year</b>	(73,578)	
<b>Net current assets</b>		233,591
<b>Total assets less current liabilities</b>		251,657
<b>Income funds</b>		
Unrestricted funds – designated		50,000
<b>Unrestricted funds – general</b>		201,657
		251,657

## Our thanks to the following partners for their generous support in 2015–16:

Big Lottery Fund, Reaching Communities • British Land • Chroma Flooring • City Bridge Trust • German YMCA • John Lewis Music Matters • John Lewis Oxford Street • John Lyon's Charity • John Lyon's Charity, School Holiday Activity Fund • London Proximity • Maylim Ltd • Oliver Wyman • Pemberton Greenish • Rockspring Plc • Ruddy Joinery • Sage Foundation • Salesforce • Squire & Partners • The 29th May 1961 Charitable Trust • Wates



# Resourceful

**Imagine bursting with the desire to achieve, but being denied the abilities we take for granted:** the mental abilities to learn, think logically, connect thoughts, to read, draw, use a computer, or do simple arithmetic or cook the simplest of meals.

The impact of enabling people with learning disabilities to lead more independent lives is amazing. They are proud to demonstrate their skills, eager to share with their peers, family and the PIP staff and, especially, with the wider community.

We're a flexible bunch at PIP. We love welcoming new supporters and organisations into the family and we make it easy for donors to see what we do and engage with us. We see fundraising as a way to increase opportunities for our students and we find that by combining fundraising with volunteering we are able to build extremely strong and meaningful partnerships.

If you are a corporate looking for an innovative organisation to support, or an individual looking for a new challenge this year, let's talk.

▼ Congratulations to our Chair Tim for walking 153 miles and raising £925 for PIP.

► The Sage Foundation donated a corporate volunteering day, split between student interaction in music and drama sessions, and strategic planning with PIP management to develop our Fruitful business plan.

▼ Our 2016 Royal Parks half marathon team from Rockspring.

▼ Many thanks to the army of riders, volunteers, staff and all supporters who made the 2016 PIP Mountain Bike Challenge such a success, raising over £48,000. Seriously good fun for a seriously good cause.





# Playful

**As well as our regular holiday enthusiasts, the PIP annual residential holiday also has so much to offer for students who have never socialised or been away from home before.** At this year's week-long residential course, PIP students enjoyed archery, boating and canoeing, swimming, orienteering and map reading, rock climbing, cooking and looking after animals. Everyone had a super time – a relaxing break in the fresh air, and a chance to make friends and have fun while practising the skills they learn at PIP every day.

◀▶ Meet Ryan. Ryan is on the autistic spectrum. He is a friendly young man who is very able academically. He understands a great deal, yet like many who come to PIP he struggles with communication. His speech is limited and he gets frustrated, especially when it is particularly noisy and his senses are 'busy'. This was a first for Ryan and his family. Ryan had never been away from his family, and Ryan's family had never been away from Ryan. He flourished in the relaxed, yet structured environment of the holiday. He loved the boat trips and feeling the breeze on his face. He loved the climbing wall and zoomed straight to the top, calculating his route carefully but without hesitation. In the photos of Ryan, his face says it all.



# Joyful

PIP encourages and empowers adults with learning disabilities to reach their full potential. All our activities focus on promoting choice, participation and independence. Many of our students are non-verbal so they can't communicate using words. PIP uses creative arts, music and drama to help people with learning disabilities express themselves and find their voice.



**Pursuing Independent Paths (PIP)**

4E Warwick Court, Shirland Mews, London W9 3DY

T 020 8960 4004 E [info@piponline.org.uk](mailto:info@piponline.org.uk)

[www.piponline.org.uk](http://www.piponline.org.uk)

Follow us on Twitter @PIPLDN, Facebook and YouTube.

Registered charity number 1088592

Registered company number 04107226

Photographs by Khalid Bari, John Lewis Bari, Dan Law, Rockspring and PIP  
Edited and designed by [www.portfoliopublishing.com](http://www.portfoliopublishing.com)